

Original Research Article

The effect of curcumin supplementation on weight loss and anthropometric indices: an umbrella review and updated meta-analyses of randomized controlled trials

Chanita Unhapitpong¹, Nint Polruang², Prapimporn Chattranukulchai Shantavasinkul^{3,4,*}, Narachai Julanon⁵, Pawin Numthavaj⁶, Ammarin Thakkinstian⁶

¹ Division of Clinical Nutrition, Department of Medicine, Khon Kaen Hospital, Khon Kaen, Thailand; ² Department of Pharmacy, Khon Kaen Hospital, Khon Kaen, Thailand; ³ Division of Nutrition and Biochemical Medicine, Department of Medicine, Faculty of Medicine Ramathibodi Hospital, Mahidol University, Bangkok, Thailand; ⁴ Graduate Program in Nutrition, Faculty of Medicine Ramathibodi Hospital, Mahidol University, Nakhon Pathom, Thailand; ⁵ Division of Dermatology, Department of Internal Medicine, Srinagarind Hospital, Khon Kaen University, Khon Kaen, Thailand; ⁶ Department of Clinical Epidemiology and Biostatistics, Faculty of Medicine Ramathibodi Hospital, Mahidol University, Bangkok, Thailand

A B S T R A C T

Background: Curcumin supplementation may promote weight loss and ameliorate obesity-related complications through its antioxidative and anti-inflammatory properties.

Objective: An umbrella review and updated meta-analysis of randomized controlled trials (RCTs) was conducted to evaluate the effect of curcumin supplementation on anthropometric indices.

Methods: Systematic reviews and meta-analyses (SRMAs) of RCTs were identified from electronic databases (Medline, Scopus, Cochrane, and Google Scholar) up to 31 March, 2022, without language restriction. SRMAs were included if they assessed curcumin supplementation on any of the following: BMI, body weight (BW), or waist circumference (WC). Subgroup analyses were performed, stratifying by patient types, severity of obesity, and curcumin formula. The study protocol was a priori registered.

Results: From an umbrella review, 14 SRMAs with 39 individual RCTs were included with a high degree of overlap. In addition, searching was updated from the last search of included SRMAs in April 2021 up to 31 March, 2022, and we found 11 additional RCTs, bringing the total up to 50 RCTs included in the updated meta-analyses. Of these, 21 RCTs were deemed of high risk of bias. Curcumin supplementation significantly reduced BMI, BW, and WC with mean differences (MDs) of -0.24 kg/m^2 (95% CI: $-0.32, -0.16 \text{ kg/m}^2$), -0.59 kg (95% CI: $-0.81, -0.36 \text{ kg}$), and -1.32 cm (95% CI: $-1.95, -0.69 \text{ cm}$), respectively. The bioavailability-enhanced form reduced BMI, BWs, and WC more, with MDs of -0.26 kg/m^2 (95% CI: $-0.38, -0.13 \text{ kg/m}^2$), -0.80 kg (95% CI: $-1.38, -0.23 \text{ kg}$) and -1.41 cm (95% CI: $-2.24, -0.58 \text{ cm}$), respectively. Significant effects were also seen in subgroups of patients, especially in adults with obesity and diabetes.

Conclusions: Curcumin supplementation significantly reduces anthropometric indices, and bioavailability-enhanced formulas are preferred. Augmenting curcumin supplement with lifestyle modification should be an option for weight reduction.

This trial was registered at PROSPERO as CRD42022321112 (https://www.crd.york.ac.uk/prospero/display_record.php?ID=CRD42022321112).

Keywords: curcumin, turmeric, umbrella review, obesity, anthropometric index, BMI, body weight, waist circumference

Introduction

Obesity is a complex disease caused by a positive balance between the energy intake and energy expenditure, contributing to excessive fat accumulation and adipose tissue dysfunction [1]. The prevalence of

obesity has been increasing worldwide, and obesity increases the risk for many diseases, particularly type 2 diabetes mellitus (T2DM), dyslipidemia, nonalcoholic fatty liver disease (NAFLD), and polycystic ovary syndrome (PCOS). One of the mechanisms linking obesity with metabolically related diseases is a proinflammatory state

Abbreviations: BW, body weight; CKD, chronic kidney disease; MA, meta-analyses; MetS, metabolic syndrome; NAFLD, nonalcoholic fatty liver disease; PCOS, polycystic ovary syndrome; RCT, randomized controlled trial; ROB, risk of bias; SMD, standardized mean difference; SRMA, systematic review and meta-analysis; T2DM, type 2 diabetes mellitus; WC, waist circumference; WMD, weighted mean difference.

* Corresponding author.

E-mail address: srapimporn@gmail.com (P.C. Shantavasinkul).

<https://doi.org/10.1016/j.ajcnut.2023.03.006>

Received 7 November 2022; Received in revised form 28 February 2023; Accepted 6 March 2023

Available online 9 March 2023

0002-9165/© 2023 The Authors. Published by Elsevier Inc. on behalf of American Society for Nutrition. This is an open access article under the CC BY license (<http://creativecommons.org/licenses/by/4.0/>).

associated with excessive body fat, particularly visceral adipose tissue, consisting of hormonally active adipocytes accumulating around intra-abdominal organs [2]. Excessive visceral adiposity induces chronic low-grade inflammation through the production of tumor necrosis factor α and interleukin (IL)-6, along with a reduction in circulating adiponectin levels [3].

Currently, the use of medicinal herbal supplements has become popular, and ~80% of the population had used them as a part of their treatment [4]. Turmeric, or *Curcuma longa*, is a member of the ginger family cultivated in Asian countries, and it is one of the most common herbs used as a culinary ingredient or a dietary supplement [5]. It has been used as a traditional medicine for centuries in Asia because of its anti-oxidant, anti-inflammatory, anticarcinogenic, antidiabetic, and antihyperlipidemia properties [6]. Curcumin is the most bioactive compound within the turmeric rhizome [7], which has highly pleiotropic properties in multiple signaling pathways [7,8] and pharmacologic activities, such as anti-inflammatory activity and modulation of oxidative conditions [9,10]. The major limitation of its therapeutic efficacy is its low bioavailability owing to poor absorption, fast metabolism, and rapid systemic elimination [11]. Hence, there have been recent attempts to increase its oral bioavailability by developing other forms of drug delivery, such as micelles, phospholipid complexes, nanoparticles, or even by adding some ingredients [7]. It has been reported in the literature that curcumin could promote weight loss and ameliorate obesity-related complications [12]. The use of curcumin has been growing with several clinical trials reported over the past few years [13], yet the results have still been inconclusive because the formulation and doses of curcumin used may have acted differently in each type of patient.

Given the substantial body of evidence in the literature, we aimed to conduct an umbrella review to systemically summarize and assess the effect of curcumin supplementation on anthropometric indices stratified by comorbidities, severity of obesity, and forms of curcumin such as whole compound, curcumin extract, and bioavailability-enhanced forms.

Methods

Literature search and selection criteria

The study protocol was a priori registered in the international prospective register of systematic reviews (PROSPERO; registration code CRD42022321112). A review of systematic reviews and meta-analyses (SRMAs) was conducted in compliance with standardized procedures [14,15]. Electronic databases such as Cochrane Central, PubMed Medline, and Elsevier Scopus were searched to identify relevant studies through to 31 March, 2022, without language restriction. A 2-stage search was performed. First, SRMAs were identified since inception to 31 March, 2022. Second, individual studies published since the last search in those SRMAs to 31 March, 2022, were identified. Additional articles from Google Scholar, related articles found in reference lists of identified articles, and relevant articles suggested by the co-authors were also included. Details of the systematic search terms are described in **Supplemental Data 1**.

Eligibility criteria and exclusion criteria

Studies were selected independently by 2 authors (CU and NP), and disagreements were resolved through consensus with a third author (PCS). Studies were eligible if they met all of the following criteria: 1) SRMAs of randomized controlled trials (RCTs), 2) containing a

comparison of the effect of curcumin supplementation with usual or standard care, and 3) defining outcomes as any anthropometric indices such as body weight (BW), BMI, and waist circumference (WC) measured before and after receiving interventions. Interventions of interest were any form of curcumin supplementation such as whole compound, curcumin extract, and bioavailability-enhanced formulas. Bioavailability-enhanced formulas included adding piperine, nanomicelle formation, phospholipid complexation, phytosomal formation, liposome, and amorphous dispersion. For the updated meta-analysis (MA), inclusion criteria were all of the following: 1) a parallel-arm or crossover RCTs in adults aged 18 y or older, 2) using any form of curcumin supplementation, and 3) containing an assessment any of anthropometric indices such as BMI, BW, and WC. Studies using curcumin in combination with other nutritional compounds except for adding piperine were excluded. If individual articles contained duplications of registered numbers of studies, the study with the largest number of participants was chosen for updated MA.

Outcomes of interests

The primary outcome of interest was change in BMI after supplementation. The secondary outcomes were changes in BW and WC after supplementation. The outcomes were measured at the beginning and at the end of the individual studies.

Data extraction

Two authors (CU and NP) independently abstracted the following data from each SRMA: the first author's name, sample size, year of publication, date of the last search, country of study, study design, dosage of curcumin, type/form of curcumin, duration of supplementation, type of control, type of SRMA, the degree of heterogeneity by I^2 and the Cochrane Q test result, effect size along with the 95% CI, assessment of the quality of included studies, and conflict of interest and funding statements. In addition, the following data from individual RCTs included in previous or newly identified SRMAs were also directly abstracted: the first author's name, sample size, year of publication, type of study, type of patients, age, dosage of curcumin, type and form of curcumin, duration of supplementation, outcomes, and registry number. The mean and SD of outcome values were extracted at pretreatment and posttreatment measurement time points stratified by treatment groups. If a report only provided the 95% CI, SE and SD were estimated using the formula in the Cochrane Handbook for Systematic Reviews of Interventions [16].

Quality assessment

The quality of SRMAs and individual RCTs were assessed using the Assessment of Multiple Systematic Reviews-2 (AMSTAR2) checklist [17] and the Cochrane Collaboration's tool for assessing the risk of bias (ROB) [18] by 2 authors (CU and NP). If there were any disagreements, consensus was reached in collaboration with a third author (PCS).

Data analysis

The degree of overlap between reports was assessed by the corrected covered area method and classified as slight, moderate, high, and very high degree of overlap if the corrected covered area was $\leq 5\%$, 6%–10%, 11%–15%, and $>15\%$, respectively [19]. For an umbrella review, effect sizes were summarized and stratified by types of patients, that is, the preplanned specific disease groups.

For updated MAs, weighted mean differences (WMDs) of continuous outcomes between curcumin and control groups were calculated, and these were pooled across studies by using a random-effects model if heterogeneity was present. Otherwise, a fixed-effects model was used. Heterogeneity was assessed using Cochrane Q test and Higgin I^2 statistic. Heterogeneity was adjudicated to be present if the P of the Q test was <0.1 or $I^2 \geq 50\%$ [20,21]. A subgroup analysis was performed by patient type of comorbidity, severity of obesity, and curcumin forms such as whole compound, curcumin extract, and bioavailability-enhanced forms. Publication bias was assessed by a funnel plot along with Egger test. Sensitivity analyses were conducted by excluding studies that have high ROB and studies with small-study effects by leave-1-out crossvalidation.

All analyses were performed using Review Manager (RevMan; version 5.4.1) [22] and R (version 4.1.2; R Core Team) [23] using the forestplot package for forest plots and using the metafor package for Egger test and funnel plots. A P value of <0.05 was considered statistical significance except for Cochrane Q test, for which a P value of <0.01 was considered statistically significant.

Results

A total of 193 studies were identified, of which 14 were SRMAs [24–37] eligible for the umbrella review. Within these, 39 individual RCTs were selected for repooling for the updated MA. The degree of overlap of included individual RCTs on the primary objective was

12.18%, indicating a high degree of overlap among the primary studies (Supplemental Table 1).

A total of 82 individual RCTs were identified since the last search of SRMA in April 2021, of which 9 RCTs were eligible for the updated MA. In addition, 2 RCTs were identified and eligible from the reference lists, resulting in 50 individual RCTs [38–87] for repooling for the updated MA (Figure 1).

Characteristics of the included studies

The characteristics of the included studies are summarized in Table 1. Of the 14 SRMAs included [24–37], the number of included RCTs (N) ranged from 4 to 18, with sample sizes (n) of 198 to 1544 (Table 1). The studies were published between 2019 and 2022, with a duration of follow-up ranging from 4 to 39 wk, and the median follow-up time was 8 wk. The mean age of participants ranged from 14.7 to 70.0 y. The study population included adults with obesity ($N = 5$, $n = 252$), NAFLD ($N = 10$, $n = 634$), PCOS ($N = 5$, $n = 336$), metabolic syndrome (MetS, $N = 8$, $n = 513$), T2DM ($N = 10$, $n = 702$), chronic kidney disease (CKD) ($N = 2$, $n = 110$) and hyperlipidemia ($N = 2$, $n = 123$). Of the 50 included studies, there were 3 types of curcumin formulations such as whole compounds (N of turmeric rhizome, powder, or capsules = 5) with dosages ranging from 2000 to 3000 mg/d, curcumin extracts with the dosages ranging from 500 to 1950 mg/d ($N = 15$), and bioavailability-enhanced formulas ($N = 27$). Bioavailability-enhanced formulas had various dosages, including curcumin ranging from 500 to 1000 mg and adding piperine 5 to 10

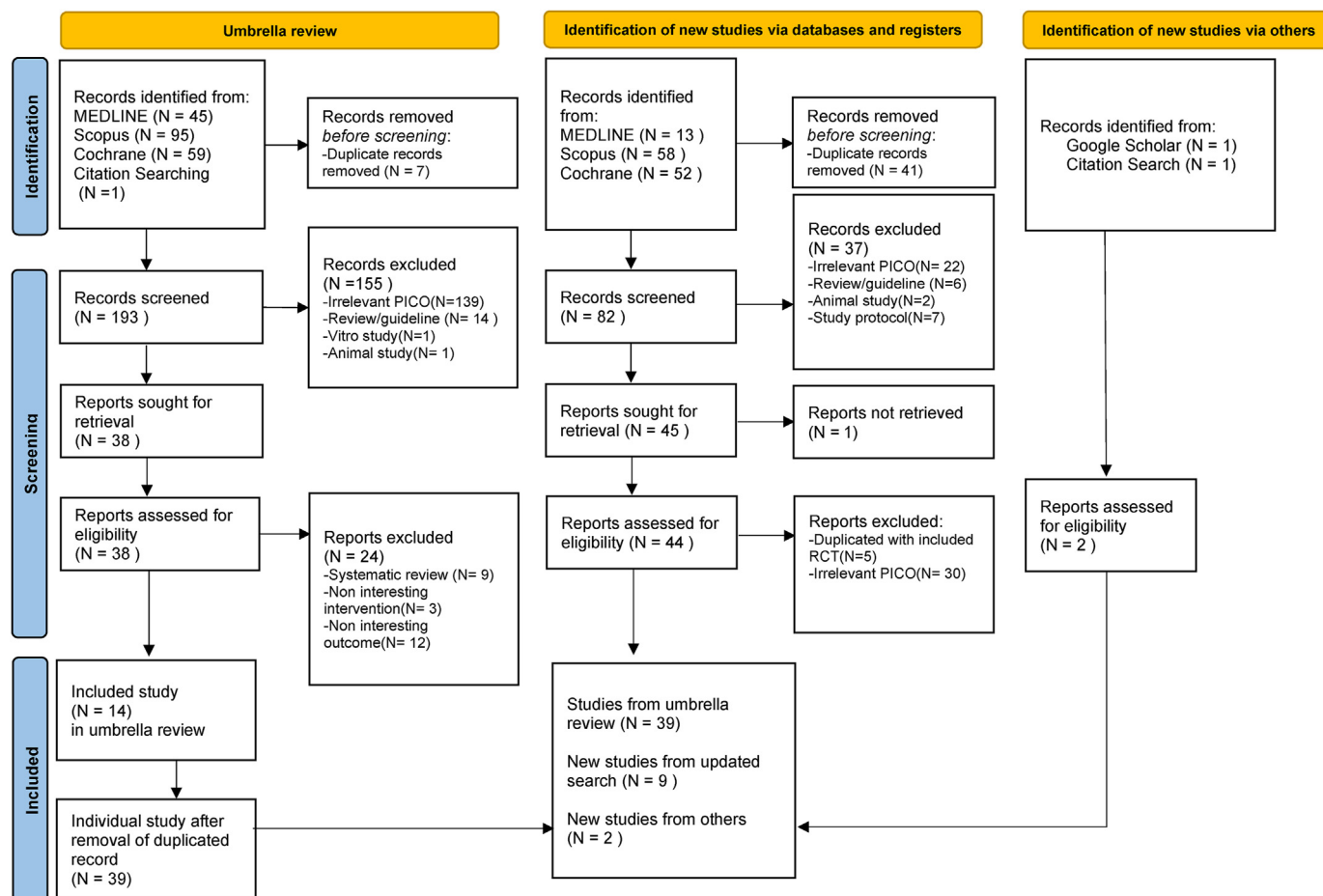


FIGURE 1. PRISMA flow diagram for updated systematic reviews, which included searches of databases, registers, and other sources.

TABLE 1
Baseline characteristics of included systematic reviews and meta-analyses in anthropometric indices

Author, Year	Country	End search	N	n	Female (%)	Range of mean ages (y)	Patients	Intervention	Dose (mg/d)	Comparator	Outcome	Follow-up time (wk)	Conflict of interest
Nouri et al., 2022 [24]	Iran	Feb 2021	4	198	198 (100)	27.6–30.97	PCOS	Curcumin	93.34–1500	Placebo	FBG, insulin level, HOMA-IR, QUICKI, BMI	6–12	None
Khalili and Nammi, 2022 [25]	Iran	April 2021	14	904	346 (38)	41.8–66.72	NAFLD	Curcumin	80–2000	Placebo	AST, ALT, FBG, TC, TG, LDL, HDL, BMI	4–12	None
Abdelazeem et al., 2021 [26]	USA	5 May 2021	5	296	296 (100)	27.6–30.97	PCOS	Curcumin, highly bioavailable gel-optimized curcumin, nanomicelle	80–1500	Placebo	FBG, insulin level, -IR, QUICKI, TC, TG, LDL, HDL, sex hormone, BW, WC, BMI, CRP	6–12	None
Zheng et al., 2021 [27]	China	22 Mar 2021	8	531	287 (54.0)	41–70	T2DM	Curcumin	180–1500	Placebo	FBG, HbA1c, TC, LDL, HDL, TG, BMI	8–24	NA
Zhang et al., 2021 [28]	China	3 Sep 2020	12	643	344 (53.5)	43–59.16	T2DM	Curcumin, curcuminoids, turmeric, nanocurcumin	80–1500	Placebo	FBG, HbA1c, HOMA-IR, TC, LDL, HDL, TG, adiponectin, BMI	8–24	None
Ashtary-Larky et al., 2021 [29]	Iran	May 2021	9	337	195 (57.9)	41.8–62.3	HD, NAFLD, T2DM, MetS, migraine	Nanocurcumin	40–120	Placebo	FBG, HbA1c, insulin level, HOMA-IR, TC, TG, LDL, HDL, CRP, IL-6, TNF- α , BP, WC, BMI	6–12	None
Altobelli et al., 2021 [30]	Italy	2000 to 2020	7	476	241 (50.6)	55–59	Uncomplicated T2DM	Curcumin	80–2100	Placebo	HbA1c, HOMA-IR, TC, TG, LDL, HDL, BMI	8–24	None
Mousavi et al., 2020 [31]	Iran	Aug 2018	11	846	662 (78.3)	25.91–59.03	Prediabetic, T2DM, obese, MetS, NAFLD	Curcumin, curcuminoids, nanomicelle, <i>Curcuma longa</i>	70–1900	Placebo	BW, WC, BMI	4–39	None
Jalali et al., 2020 [32]	Iran	Sep 2019	9	588	272 (46.3)	37.75–48.95	NAFLD	Curcumin	50–1500	Placebo	AST, ALT, FBG, HbA1c, insulin level, HOMA-IR, TC, TG, LDL, HDL, BW, WC, BMI	8–12	None
Baziar and Parohan, 2020 [33]	Iran	March 2019	8	567	216 (38.1)	42–54	NAFLD	Curcumin, turmeric, nanocurcumin	70–3000	Placebo	BW, WC, BMI	8–12	None
Wei et al., 2019 [34]	China	Mar 2018	4	229	110 (48)	40.38–56.67	NAFLD	Curcumin, turmeric powder	500–3000	Placebo	AST, ALT, FBG, HbA1c, insulin level, HOMA-IR, TC, TG, LDL, HDL, BW	8–24	None

(continued on next page)

TABLE 1 (continued)

Author, Year	Country	End search	N	n	Female (%)	Range of mean ages (y)	Patients	Intervention	Dose (mg/d)	Comparator	Outcome	Follow-up time (wk)	Conflict of interest
Jafarid et al., 2019 [35]	Iran	27 Jan 2019	8	449	220 (49)	40–65	NAFLD	Curcumin, turmeric	80–3000	Placebo	BW, WC, BMI	8–24	None
Azhdari et al., 2019 [36]	Iran	Sep 2018	7	503	224 (44.5)	38.05–59.32	MetS	Curcumin, turmeric, curcuminoids in capsule or powder	800–2400	Placebo	FBG, TG, HDL, BP, WC	4–12	None
Akbari et al., 2019 [37]	Iran	Jan 2018	18	1544	853 (55.2)	14.7–60.95	Obese, MetS, NAFLD, T2DM, DLP	Curcumin, turmeric, curcuminoids, nanocurcumin (powder and capsule)	80–2400	Placebo	BW, WC, BMI, hip ratio, leptin, adiponectin	4–39	None

AST, aspartate transaminase; ALT, alanine transaminase; BP, blood pressure; BW, bodyweight; CRP, c-reactive protein; DLP, dyslipidemia; FBG, fasting blood glucose; HbA1c, hemoglobin A1c; HD, hemodialysis; HDL, high-density lipoprotein cholesterol; HOMA-IR, homeostatic model assessment for insulin resistance; LDL, low-density lipoprotein cholesterol; MetS, metabolic syndrome; N, Number of included studies; n, number of subjects; NA, not available; NAFLD, nonalcoholic fatty liver disease; PCOS, polycystic ovary syndrome; QUICKI, quantitative insulin-sensitivity check index; T2DM, type 2 diabetes mellitus; TC, total cholesterol; TG, triglyceride; WC, waist circumference.

mg/d, nanocurcumin ranging from 80 to 180 mg/d, liposome as phytosomal or phospholipid ranging from 250 to 1000 mg/d, micelles at 294 mg/d, and amorphous dispersion at 500 mg/d. BMI (in kg/m²) was classified according to the World Health Organization (WHO) as <25 (N = 2), 25–29.9 (N = 32), 30–34.9 (N = 15), and 35.0–39.9 (N = 1). The characteristics of the included RCTs are summarized in Supplemental Table 2.

Quality assessment

The AMSTAR2 assessments show that 3 [26,34,37], 5 [28–31,33], 4 [25,32,35,36], and 2 [24,27] SRMAs had high, moderate, low, and critically low quality, respectively (Supplemental Table 3). For the ROB assessment, 21 of the 50 RCTs were classified as high-risk studies (Supplemental Figures 1 and 2).

Anthropometric indices

Curcumin and its active ingredients were used as treatment supplements, which were compared with either a placebo or a standard treatment. A relative MD between pretreatment and posttreatment was estimated for each treatment and compared between the treatment groups across RCTs. One SRMA by Zheng et al. [27] pooled the MD calculated to make it similar to other SRMAs. In addition, the effect size of the SRMA in the study by Zhou et al. [88] was transformed from exponentiated standard MD to standardized mean difference (SMD), which was more appropriate and presented in a forest plot. The results of repooling effect sizes on anthropometric indices and lipid parameters are described further.

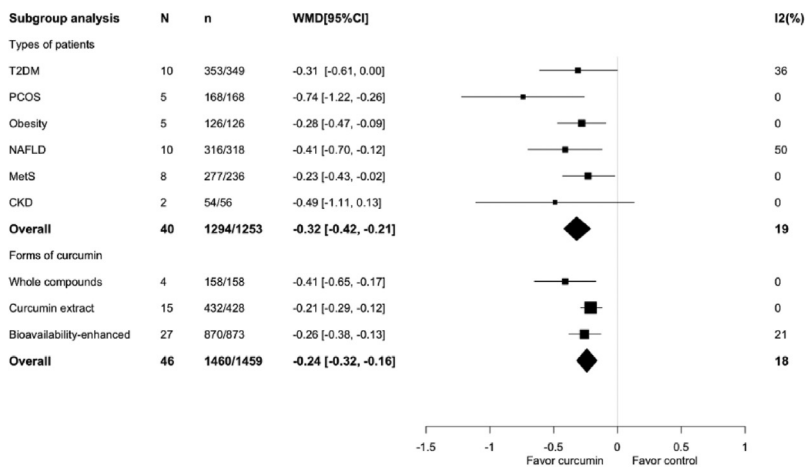
BMI

The effects of curcumin supplementation on BMI are displayed in Supplemental Figure 3A. Two SRMAs reported that curcumin supplementation did not show a significant effect on BMI in patients with PCOS [24,26]. Of the 4 SRMAs [25,32,33,35] in patients with NAFLD, only 1 MA [33] showed a significant lowering of BMI compared with that by placebo, with a WMD of –0.34 kg/m² (95% CI: –0.64, –0.04 kg/m²; I² = 63.2%) and a high heterogeneity. Three SRMAs [27,28,30] were conducted among patients with T2DM, but none of the SRMAs showed significant effects compared with controls. Two [31,37] of the 3 SRMAs in mixed populations (i.e., patients with MetS and related disorders) showed a significant BMI reduction with an SMD of –0.37 kg/m² (95% CI: –0.61, –0.13 kg/m²; I² = 69.7%) and WMD of –0.48 kg/m² (95% CI: –0.78, –0.17 kg/m²; I² = 60.2%), respectively, both of which had a high heterogeneity.

Our updated MA showed a reduction of BMI in the curcumin group relative to the control group with a WMD of –0.24 kg/m² (95% CI: –0.32, –0.16 kg/m²; I² = 18%) (Figure 2). Subgroup analyses according to the patient comorbidities showed significant reductions in BMI in adults with PCOS, obesity, NAFLD, and MetS with WMDs of –0.74 (95% CI: –1.22, –0.26; I² = 0%), –0.28 (95% CI: –0.47, –0.09; I² = 0%), –0.41 (95% CI: –0.70, –0.12; I² = 50%), and –0.23 (95% CI: –0.43, –0.02; I² = 0%), respectively (Figure 2A and Supplemental Figure 4A). However, subgroup analyses did not show significant reductions in BMI for adults with T2DM and CKD (Figure 2A and Supplemental Figure 4A). In addition, all forms of curcumin such as whole compounds, curcumin extract, and bioavailability-enhanced formulas significantly reduced BMI (in kg/m²), with WMDs of –0.41 (95% CI: –0.65, –0.17; I² = 0%), –0.21 (95% CI: –0.29, –0.12; I² = 0%), and –0.27 (95% CI: –0.39, –0.15; I² = 29%), respectively (Figure 2 and Supplemental Figure 5A). A significant effect of curcumin was seen in subjects with BMIs ranging

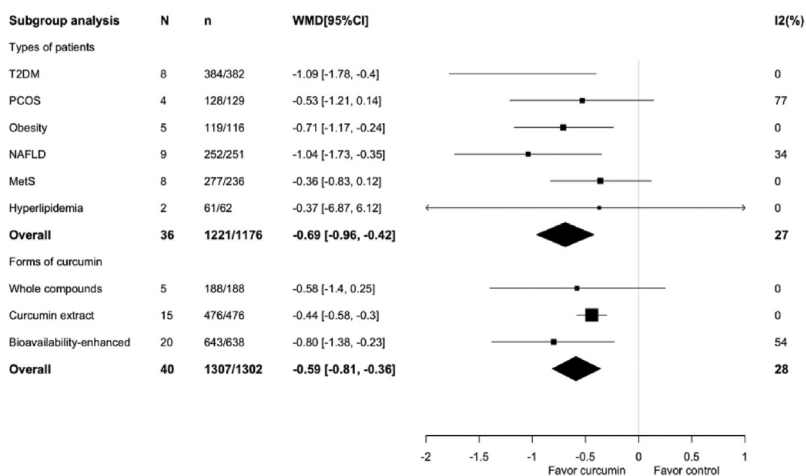
A

BMI



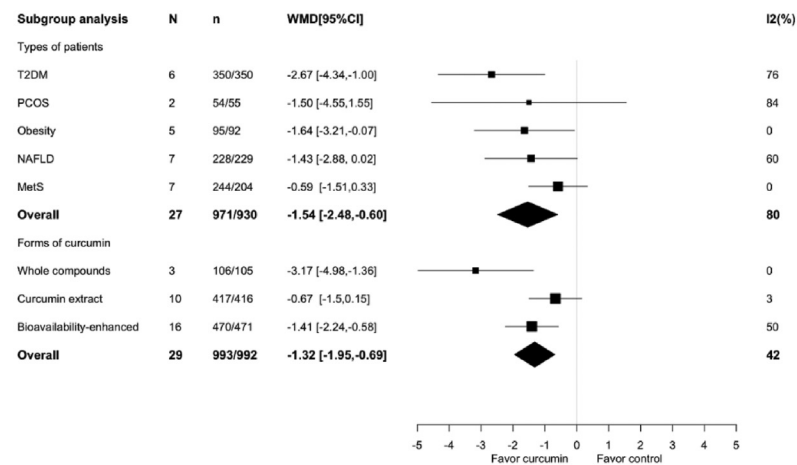
B

BW



C

WC



(caption on next page)

TABLE 2

The subgroup analysis according to baseline BMI on anthropometric outcomes

Outcome	N	n1/n0	WMD (95% CI) ¹	Heterogeneity	
				I ² (%)	P-heterogeneity
BMI (kg/m ²)					
BMI <25	2	64/64	0.69 (−0.91, 2.29)	51	0.15
BMI 25–29.9	27	898/898	−0.25 (−0.39, −0.1)	58	0.0001
BMI ≥30	16	498/457	−0.12 (−0.2, −0.03)	10	0.34
Overall	45	1460/1419	−0.19 (−0.28, −0.1)	49	0.0002
Body weight (kg)					
BMI 25–29.9	23	800/800	−0.68 (−0.89, −0.47)	26	0.12
BMI ≥30	16	507/462	−0.51 (−0.95, −0.08)	55	0.004
Overall	39	1307/1262	−0.61 (−0.83, −0.40)	43	0.0003
Waist circumference (cm)					
BMI 25–29.9	17	672/675	−1.52 (−2.20, −0.85)	91	<0.00001
BMI ≥30	11	321/277	−0.95 (−1.86, −0.04)	42	0.07
Overall	28	993/952	−1.34 (−1.87, −0.81)	86	<0.00001

I², percentage degree of heterogeneity; N, number of included studies; n1, number of participants in the intervention group; n0, number of participants in the control group; WMD, weighted mean difference.

¹ This was performed by a random-effects model by Review Manager (RevMan), version 5.4.1.

from 25 to 29.9 and ≥30 kg/m² but not in those with normal BMI levels (Table 2).

Body weight

There were no significant effects of curcumin in patients with PCOS and NAFLD [26,32,33,35] (Supplemental Figure 3B) except for those in the study by Wei et al. [34], which included only 2 studies and was a subset of another SRMA in patients with NAFLD. Two SRMAs, by Akbari et al. [37] including adults with obesity, MetS, NAFLD, T2DM, or dyslipidemia and by Mousavi et al. [31], assessed curcumin supplements in patients with prediabetes, T2DM, obesity, MetS, and NAFLD. These supplements could significantly reduce BW with an SMD of −0.23 kg (95% CI: −0.39, −0.06 kg; I² = 45.7%) and WMD of −1.14 kg (95% CI: −2.17, −0.12 kg; I² = 86.7%), but the study by Mousavi et al. had a high heterogeneity [31]. Ashtary et al. [29] included mixed populations and reported no significant results in reduction of BW, comparing nanocurcumin supplement with placebo.

Our updated MA showed a significant reduction of BW with a WMD of −0.59 kg (95% CI: −0.81, −0.36 kg; I² = 28%) (Figure 2B). Subgroup analyses also suggested a significant reduction in BW in adults with T2DM, obesity, or NAFLD, with WMDs of −1.09 kg (95% CI: −1.78, −0.4 kg; I² = 0%), −0.71 kg (95% CI: −1.17, −0.24 kg; I² = 0%), and −1.04 kg (95% CI: −1.73, −0.35 kg; I² = 34%), respectively (Figure 2B and Supplemental Figure 4B). Moreover, curcumin extract and bioavailability-enhanced formula (but not whole compound) significantly reduced BW (Figure 2B and Supplemental Figure 5B). Furthermore, a significant effect of curcumin was seen in subjects with BMI range categories of 25–29.9 and ≥30 kg/m² (Table 2).

Waist circumference

In patients with NAFLD, 2 of the 4 SRMAs showed significant curcumin effects in reduction in WC with an SMD of −1.01 cm (95% CI: −1.3, −0.71 cm; I² = 96.1%) [32] and a WMD of −2.12 cm (95% CI: −3.26, −0.98 cm; I² = 27.4%) [33], of which the first MA was a

subset of the second MA (Supplemental Figure 3C). There was no significant difference in WC change between curcumin supplement and placebo in patients with PCOS [26], MetS [36], or mixed populations [29,31] with the exception of those in the study by Akbari et al. [37], who reported an SMD of −0.25 cm (95% CI: −0.44, −0.05 cm; I² = 42.1%).

Our repooling MA based on 29 RCTs showed a significant reduction in WC with a WMD of −1.32 cm (95% CI: −1.95, −0.69 cm; I² = 42%) (Figure 2C). Subgroup analyses showed that curcumin could significantly reduce WC with a WMD of −2.67 cm (95% CI: −4.34, −1.00 cm; I² = 76%) and −1.64 cm (95% CI: −3.21, −0.07 cm; I² = 0%) in adults with T2DM and obesity, respectively (Figure 2C and Supplemental Figure 4C), whereas whole compounds and bioavailability-enhanced forms showed significant effects in WC reduction (Figure 2C and Supplemental Figure 5C). Moreover, curcumin could reduce BMI in both BMI range categories of 25–29.9 and ≥30 kg/m² (Table 2).

Publication bias

Funnel plots showed no evidence of asymmetry (Supplemental Figure 6), which was confirmed by Egger test P values: P = 0.27 for BMI, 0.20 for BW, and 0.89 for WC.

Sensitivity analyses

Sensitivity analyses were performed by excluding studies with qualitatively high ROB ratings and studies showing small-study effects. For the exclusion of high ROB ratings, 20, 16, and 10 studies were excluded from pooling of BMI, BW, and WC, respectively (Table 3 and Supplemental Figure 7). The effects of curcumin on BMI, BW, and WC were still significant, with WMDs of −0.34 kg/m² (95% CI: −0.47, −0.21 kg/m²; I² = 24%), −0.68 kg (95% CI: −1.01, −0.34 kg; I² = 31%), and −1.09 cm (95% CI: −1.74, −0.43 cm; I² = 46%), respectively. One study each was excluded in a leave-1-out cross-validation analysis for BMI [63], BW [51], and WC [45] because these analyses showed small-study effects defined as a high-effect size with a

FIGURE 2. Pooled effects of curcumin supplementation according to comorbidities and curcumin forms: (A) BMI (kg/m²), (B) body weight (kg), and (C) waist circumference (cm). *This was performed by a random-effects model by Review Manager (RevMan), version 5.4.1. I², percentage of degree of heterogeneity; MetS, metabolic syndrome; NAFLD, nonalcoholic fatty liver disease; N, number of studies; n1, number of participants in the intervention group; n0, number of participants in the control group; PCOS, polycystic ovary syndrome; T2D, type 2 diabetes mellitus; WMD, weighted mean difference.

TABLE 3

The sensitivity analysis excluding studies with a high risk of bias and by leave-one-out crossvalidation for small-study effects pooling BMI, body weight, and waist circumference outcomes

Outcome	No. of studies (left for the analysis)	n1/n0	WMD (95% CI) ¹	Heterogeneity	
				I ² (%)	P-heterogeneity
BMI (kg/m²)					
All studies	46	1460/1459	−0.24 (−0.32, −0.16)	18	0.15
Excluded high ROB	26	890/890	−0.34 (−0.47, −0.21)	24	0.13
Leave-1-out analysis (Mohammadi et al., 2013 [63])	45	1445/1444	−0.25 (−0.33, −0.16)	20	0.13
Body weight (kg)					
All studies	40	1307/1302	−0.59 (−0.81, −0.36)	28	0.05
Excluded high ROB	24	898/896	−0.68 (−1.01, −0.34)	31	0.08
Leave-1-out analysis (Di Pierro et al., 2015 [51])	39	1285/1280	−0.59 (−0.82, −0.36)	30	0.04
Waist circumference (cm)					
All studies	29	993/992	−1.32 (−1.95, −0.69)	42	0.01
Excluded high ROB	19	765/768	−1.09 (−1.74, −0.43)	46	0.02
Leave-1-out analysis (Campbell et al., 2017 [45])	28	982/981	−1.33 (−1.96, −0.69)	44	0.007

I², percentage degree of heterogeneity; n1, number of participants in the intervention group; n0, number of participants in the control group; ROB, risk of bias; WMD, weighted mean difference.

¹ This was performed by a random-effects model by Review Manager (RevMan), version 5.4.1.

high variance from funnel plots (Supplemental Figure 6). The results of curcumin effects on all anthropometric indices did not change considerably compared with those of overall pooling (Table 3 and Supplemental Figure 8).

Discussion

We have performed an umbrella review to summarize the findings of previous SRMAs on the effect of curcumin supplementation on anthropometric indices. We have also updated pooling MAs by combining the previous and recent RCTs stratified by patient comorbidities, curcumin forms, and severity of obesity. This analysis included 50 RCTs with a pooled sample size of 2879 participants. We found that curcumin supplementation was associated with a significant reduction in BMI, BW, and WC. Our findings suggest that curcumin can significantly reduce BMI by approximately −0.74, −0.41, −0.28, and −0.23 kg/m² in adults with PCOS, NAFLD, obesity, and MetS, respectively. It can also significantly reduce BW by approximately −1.09, −1.04, and −0.71 kg in adults with T2DM, NAFLD and obesity and reduce WC by approximately −2.67 and −1.64 cm in adults with T2DM and obesity, respectively. Curcumin extract and bioavailability-enhanced formulas seem to be the most effective formulas for weight reduction.

Curcumin or diferuloylmethane is a yellow crystalline lipophilic polyphenol. It is an active ingredient of turmeric with anti-oxidant and anti-inflammatory properties. Currently, the United States Food and Drug Administration (USFDA) has approved curcumin as Generally Recognized as Safe (GRAS) [89], and the European Food Safety Authority (EFSA) has recommended an acceptable daily intake of 3 mg/kg/d [90]. Several studies have shown curcumin to have an acceptable safety profile with minimal side effects [10,91]. However, it is not recommended in patients with cholelithiasis [92].

It has been shown that curcumin has several therapeutic benefits for various diseases, such as MetS, T2DM, hyperlipidemia, and Alzheimer diseases [13,93]. However, a major limitation to curcumin as an agent with an oral route of administration is its poor bioavailability due to its poor absorption in the gastrointestinal tract, fast metabolism, and rapid elimination from the systemic circulation [7]. There may be a potential advantage in consuming turmeric as a culinary ingredient because volatile and nonvolatile oils found in turmeric enhance the

bioavailability of curcumin. Moreover, when consuming turmeric with fats or oils in foods, it can be absorbed directly into blood circulation through the lymphatic system, bypassing the liver metabolism [94,95]. In addition, black pepper, which contains piperine, also enhances the bioavailability of turmeric by slowing down the metabolism of curcumin, allowing the curcumin to stay longer in the body [96,97]. Thus, to use curcumin as a dietary supplement, different delivery systems have been proposed to increase the bioavailability, such as nanomicelle formation, phospholipid complexes, liposomes, amorphous dispersion, and adding piperine [7]. Nanocurcumin, a bioavailability-enhanced form, is synthesized by ionic gelation and antisolvent precipitation, which increases the pharmacologic and biological benefits, resulting in a more efficient delivery system and better therapeutic value [39]. Moreover, combining curcumin with piperine could increase the absorption, serum concentration, and bioavailability of curcumin in animal models and human subjects [40,41]. Another formulation is curcumin–phospholipid complex, which enhances aqueous solubility of lipophilic curcumin, and this formulation can be prepared by a simple and reproducible method [42]. Previous studies have also demonstrated better pharmacokinetic profiles in bioavailability-enhanced curcumin formulations [98,99] with better outcomes [100]. This study also concurs that bioavailability-enhanced forms significantly improve anthropometric indices.

Obesity is a global health problem and a major risk factor of T2DM, dyslipidemia, NAFLD, and cardiovascular disease. Our updated MAs demonstrate the beneficial effects of curcumin supplementation on reduction in BMI, BW, and WC, which confirms the conclusions of the most recent SRMAs [100]. The exact mechanisms underlying the effects of curcumin supplementation on weight reduction remain to be elucidated. Nevertheless, there are several possible mechanisms responsible for the health benefits of curcumin in treating obesity. First, curcumin suppresses adipocyte differentiation by activation of AMP-activated protein kinase, thereby downregulating peroxisome proliferator-activated receptor γ [101,102]. In addition, curcumin induces fatty acid oxidation and increases adipocyte apoptosis [101,102]. Furthermore, curcumin inhibits NF- κ B in adipose tissue, resulting in a reduction in inflammatory cytokine levels, for example, tumor necrosis factor α , IL-1, IL-6, monocyte chemoattractant protein 1, and plasminogen activator inhibitor type 1. High leptin levels from leptin resistance in obesity activate Janus kinase/signal transducers and activators of

transcription signaling pathways, resulting in the development of obesity. Curcumin has also been shown to increase adiponectin levels [102,103], decrease leptin levels [47,104], and inhibit Janus kinase [105]. Gut microbiota dysbiosis is also one of the pathogenesis in obesity and curcumin that acts as a prebiotic, distributing throughout the gut and influencing the composition and diversity of the microbiota. However, the effect of curcumin on obesity through gut microbiota homeostasis is still controversial [106–108]. Finally, curcumin increases energy expenditure by increasing metabolic activity in brown and white fat, which is mediated by activation of FNDC5/irisin [109]. This study demonstrated that curcumin supplementation can reduce at least one of the anthropometric indices in patients with PCOS, NAFLD, obesity, or MetS. Although the efficacy of curcumin supplementation seems to be the greatest in patients with obesity and NAFLD, there were nonsignificant health benefits in patients with CKD or hyperlipidemia. It should be noted that there were only 2 studies on CKD and 2 studies on hyperlipidemia, which were included in this analyses. This study included participants with various metabolically related diseases, and most participants were with overweight and obesity. However, some studies included participants with a normal BMI level at the baseline. This may explain the conflicting outcomes in the subgroup analysis, demonstrating the beneficial effects of curcumin supplementation on BW, BMI, and WC reduction only in adults with overweight and obesity but not in adults with a normal BMI level. Adipose tissue dysfunction is a key factor in the development of metabolically related diseases, such as insulin resistance, T2DM, NAFLD, dyslipidemia, and cardiovascular disease. Although greater weight loss provides greater benefits, as little as 2%–5% of weight loss may lead to clinically meaningful reductions in cardiovascular risk factors [110,111]. This study demonstrated that curcumin supplementation can reduce at least one of the anthropometric indices in patients with PCOS, T2DM, NAFLD, obesity, and MetS, and adults with obesity or T2DM may benefit the most because curcumin supplementation can reduce both BW and WC.

Strengths and limitations

This review has strengths. First, the results from several sources of SRMAs were extensively combined, and repooling analyses were performed to summarize the effects of curcumin on anthropometric indices. Second, we included only RCTs with either parallel-arm or crossover designs. Third, we conducted subgroup analyses according to patient comorbidities, severity of obesity, and curcumin formulas along with their dosages based on current usage. Taken together, these strengths allow us to present an extensive and in-depth analysis of the causal effect of curcumin, to suggest the gaps of knowledge, and to suggest the way forward with future research aims.

However, this review has limitations. First, there was a significant heterogeneity across studies in many of the pooled outcomes. Thus, we used random-effects models to address heterogeneity in the repooling MAs, and we performed subgroup analyses, resolving the interpretation of most of the high heterogeneity findings. Moreover, dose–response MA was not applied in our studies, especially in bioavailability-enhanced forms, which could have given us more valuable insights.

In conclusion, this study demonstrated that curcumin supplementation reduces BMI, BW, and WC, particularly in adults with PCOS, NAFLD, obesity, or MetS. The benefit of curcumin supplementation seems to be the greatest in adults with obesity or T2DM. Bioavailability-enhanced formulas are preferred for their greater average treatment effect than either whole compounds or curcumin

extracts. Curcumin supplementation should be an option for treating and managing these patients, additional to lifestyle modification.

Acknowledgements

We thank Ramathibodi Hospital, Bangkok, Thailand, for various opportunities to learn and share. We also thank the Curcumin Working Group for their expert advice and encouragement throughout this project. The authors' responsibilities were as follows—CU, PCS, PN, AT: designed the research; CU, PCS, NP, AT: performed the research; CU, PCS, PN: provided the essential reagents; CU, NJ, PN, AT: performed the statistical analysis; CU, NP, PN, AT: wrote the manuscript; CU, NP, PCS, NJ, PN, AT: held responsible for the final contents of the manuscript; and all authors: read and approved the final version of the manuscript. The authors declare that they have no known competing financial interests or personal relationships that could have influenced this work.

Data Availability

The data described in the manuscript, code book, and analytic code will be made available on request pending application and approval.

Funding

This study was supported by the National Research Council of Thailand (N42A640323).

Appendix A. Supplementary data

Supplementary data to this article can be found online at <https://doi.org/10.1016/j.ajcnut.2023.03.006>.

References

- [1] J.I. Mechanick, D.L. Hurlley, W.T. Garvey, Adiposity-based chronic disease as a new diagnostic term: the American Association of Clinical Endocrinologists and American College of Endocrinology position statement, *Endocr. Pract.* 23 (3) (2017) 372–378, <https://doi.org/10.4158/ep161688.Ps>.
- [2] J.P. Després, I. Lemieux, Abdominal obesity and metabolic syndrome, *Nature* 444 (7121) (2006) 881–887, <https://doi.org/10.1038/nature05488>.
- [3] J.-P. Després, A.C. Carpentier, A. Tchernof, I.J. Neeland, P. Poirier, Management of obesity in cardiovascular practice, *J. Am. Coll. Cardiol.* 78 (5) (2021) 513–531, <https://doi.org/10.1016/j.jacc.2021.05.035>.
- [4] M. Ekor, The growing use of herbal medicines: issues relating to adverse reactions and challenges in monitoring safety, *Front. Pharmacol.* 4 (2014) 177, <https://doi.org/10.3389/fphar.2013.00177>.
- [5] World Health Organization, WHO monographs on selected medicinal plants, World Health Organization, Geneva, 2006.
- [6] D.H.H. Shahin, R. Sultana, J. Farooq, T. Taj, U.F. Khaiser, N.S.A. Alanazi, M.K. Alshammari, et al., Insights into the uses of traditional plants for diabetes nephropathy: a review, *Curr. Issues Mol. Biol.* 44 (7) (2022) 2887–2902.
- [7] H. Gopinath, K. Karthikeyan, Turmeric: a condiment, cosmetic and cure, *Indian J. Dermatol. Venereol. Leprol.* 84 (1) (2018) 16–21, https://doi.org/10.4103/ijdv.IJDVL_1143_16.
- [8] H. Mirzaei, A. Masoudifar, A. Sahebkar, N. Zare, J. Sadri Nahand, B. Rashidi, et al., MicroRNA: a novel target of curcumin in cancer therapy, *J. Cell. Physiol.* 233 (4) (2018) 3004–3015, <https://doi.org/10.1002/jcp.26055>.
- [9] J.S. Jurenka, Anti-inflammatory properties of curcumin, a major constituent of *Curcuma longa*: a review of preclinical and clinical research, *Altern. Med. Rev.* 14 (2) (2009) 141–153.
- [10] S.J. Hewlings, D.S. Kalman, Curcumin: a review of its effects on human health, *Foods* 6 (10) (2017) 92, <https://doi.org/10.3390/foods6100092>.
- [11] P. Anand, A.B. Kunnumakkara, R.A. Newman, B.B. Aggarwal, Bioavailability of curcumin: problems and promises, *Mol. Pharmacol.* 4 (6) (2007) 807–818, <https://doi.org/10.1021/mp700113r>.
- [12] P.G. Bradford, Curcumin and obesity, *Biofactors* 39 (1) (2013) 78–87, <https://doi.org/10.1002/biof.1074>.

- [13] R. Masella, F. Cirulli, Curcumin: a promising tool to develop preventive and therapeutic strategies against non-communicable diseases, still requiring verification by sound clinical trials, *Nutrients* 14 (7) (2022) 1401, <https://doi.org/10.3390/nu14071401>.
- [14] J.P.A. Ioannidis, Integration of evidence from multiple meta-analyses: a primer on umbrella reviews, treatment networks and multiple treatments meta-analyses, *CMAJ* 181 (8) (2009) 488–493, <https://doi.org/10.1503/cmaj.081086>.
- [15] E. Aromataris, R. Fernandez, C.M. Godfrey, C. Holly, H. Khalil, P. Tungpunkom, Summarizing systematic reviews: methodological development, conduct and reporting of an umbrella review approach, *Int. J. Evid. Based Healthc.* 13 (3) (2015) 132–140, <https://doi.org/10.1097/xe.0000000000000055>.
- [16] J.P.T. Higgins, T. Li, J.J. Deeks, Choosing effect measures and computing estimates of effect, in: J.P.T. Higgins, J. Thomas, J. Chandler, M. Cumpston, T. Li, M.J. Page, V.A. Welch VA (Eds.), *Cochrane handbook for systematic reviews of interventions*, 2019, pp. 143–176. *Cochrane*.
- [17] B.J. Shea, B.C. Reeves, G. Wells, M. Thuku, C. Hamel, J. Moran, et al., AMSTAR 2: a critical appraisal tool for systematic reviews that include randomised or non-randomised studies of healthcare interventions, or both, *BMJ* 358 (2017) j4008, <https://doi.org/10.1136/bmj.j4008>, j.
- [18] J.P.T. Higgins, D.G. Altman, P.C. Gøtzsche, P. Jüni, D. Moher, A.D. Oxman, et al., The Cochrane Collaboration's tool for assessing risk of bias in randomised trials, *BMJ* 343 (2011) d5928, <https://doi.org/10.1136/bmj.d5928>.
- [19] D. Pieper, S.L. Antoine, T. Mathes, E.A. Neugebauer, M. Eikermann, Systematic review finds overlapping reviews were not mentioned in every other overview, *J. Clin. Epidemiol.* 67 (4) (2014) 368–375, <https://doi.org/10.1016/j.jclinepi.2013.11.007>.
- [20] Y. Chang, M.R. Phillips, R.H. Guymer, L. Thabane, M. Bhandari, V. Chaudhary, C.C. Wykoff, et al., The 5 min meta-analysis: understanding how to read and interpret a forest plot, *Eye* 36 (4) (2022) 673–675, <https://doi.org/10.1038/s41433-021-01867-6>.
- [21] J.P.T. Higgins, S.G. Thompson, J.J. Deeks, D.G. Altman, Measuring inconsistency in meta-analyses, *BMJ* 327 (7414) (2003) 557–560, <https://doi.org/10.1136/bmj.327.7414.557>.
- [22] Review Manager (RevMan), [Computer program]. Version 5.4, The Cochrane Collaboration, 2020.
- [23] R Core Team, R: a language and environment for statistical computing, R Foundation for Statistical Computing, Vienna, Austria, 2021.
- [24] M. Nouri, S. Sohaei, M.N. Shalaby, S. Mehrabani, A. Ramezani, S. Faghhih, Effect of curcumin on body mass index and glycemic indices in females with PCOS: a systematic review and meta-analysis of randomized controlled trial, *Nutr. Food Sci.* 52 (7) (2022) 1129–1141, <https://doi.org/10.1108/NFS-11-2021-0334>.
- [25] L. Khalili, S. Nammi, The effects of curcumin supplementation on metabolic biomarkers and body mass index in patients with nonalcoholic fatty liver disease, a systematic review and meta-analysis of randomized controlled trials, *Curr. Pharm. Des.* 28 (23) (2022) 1911–1925, <https://doi.org/10.2174/1381612828666220328111141>.
- [26] B. Abdelazeem, K.S. Abbas, J. Shehata, N. Baral, S. Banour, M. Hassan, The effects of curcumin as dietary supplement for patients with polycystic ovary syndrome: an updated systematic review and meta-analysis of randomized clinical trials, *Phytother. Res.* 36 (1) (2022) 22–32, <https://doi.org/10.1002/ptr.7274>.
- [27] Z.H. Zheng, H.J. Pan, Z.N. Zhao, H. Yuan, W.Y. Li, B.G. Zhang, et al., Meta-analysis of efficacy of curcumin in the treatment of complications of type II diabetes mellitus, *Chin. Pharm. J.* 56 (6) (2021) 489–496, <https://doi.org/10.11669/cpj.2021.06.010>.
- [28] T. Zhang, Q. He, Y. Liu, Z. Chen, H. Hu, Efficacy and safety of curcumin supplement on improvement of insulin resistance in people with type 2 diabetes mellitus: a systematic review and meta-analysis of randomized controlled trials, *Evid. Based Complement. Alternat. Med.* 2021 (2021) 4471944, <https://doi.org/10.1155/2021/4471944>.
- [29] D. Ashtary-Larky, M. Rezaei Kelishadi, R. Bagheri, S.P. Moosavian, A. Wong, S.H. Davoodi, et al., The effects of nano-curcumin supplementation on risk factors for cardiovascular disease: a GRADE-assessed systematic review and meta-analysis of clinical trials, *Antioxidants (Basel)* 10 (7) (2021) 1015, <https://doi.org/10.3390/antiox10071015>.
- [30] E. Altobelli, P.M. Angeletti, C. Marziliano, M. Mastrodomenico, A.R. Giuliani, R. Petrocelli, Potential therapeutic effects of curcumin on glycemic and lipid profile in uncomplicated type 2 diabetes—a meta-analysis of randomized controlled trial, *Nutrients* 13 (2) (2021) 404, <https://doi.org/10.3390/nu13020404>.
- [31] S.M. Mousavi, A. Milajerdi, H.K. Varkaneh, M.M. Gorjipour, A. Esmailzadeh, The effects of curcumin supplementation on body weight, body mass index and waist circumference: a systematic review and dose-response meta-analysis of randomized controlled trials, *Crit Rev Food Sci Nutr* 60 (1) (2020) 171–180, <https://doi.org/10.1080/10408398.2018.1517724>.
- [32] M. Jalali, M. Mahmoodi, Z. Mosallanezhad, R. Jalali, M.H. Imanieh, S.P. Moosavian, The effects of curcumin supplementation on liver function, metabolic profile and body composition in patients with non-alcoholic fatty liver disease: a systematic review and meta-analysis of randomized controlled trials, *Complement Ther Med* 48 (2020) 102283, <https://doi.org/10.1016/j.ctim.2019.102283>.
- [33] N. Baziar, M. Parohan, The effects of curcumin supplementation on body mass index, body weight, and waist circumference in patients with nonalcoholic fatty liver disease: a systematic review and dose-response meta-analysis of randomized controlled trials, *Phytother. Res* 34 (3) (2020) 464–474, <https://doi.org/10.1002/ptr.6542>.
- [34] Z. Wei, N. Liu, X. Tantai, X. Xing, C. Xiao, L. Chen, et al., The effects of curcumin on the metabolic parameters of non-alcoholic fatty liver disease: a meta-analysis of randomized controlled trials, *Hepatol. Int.* 13 (3) (2019) 302–313, <https://doi.org/10.1007/s12072-018-9910-x>.
- [35] S. Jafariarad, A. Mansoori, A. Adineh, Y. Panahi, A. Hadi, R. Goodarzi, Does turmeric/curcumin supplementation change anthropometric indices in patients with non-alcoholic fatty liver disease? a systematic review and meta-analysis of randomized controlled trials, *Clin. Nutr. Res.* 8 (3) (2019) 196–208, <https://doi.org/10.7762/cnr.2019.8.3.196>.
- [36] M. Azhdari, M. Karandish, A. Mansoori, Metabolic benefits of curcumin supplementation in patients with metabolic syndrome: a systematic review and meta-analysis of randomized controlled trials, *Phytother. Res* 33 (5) (2019) 1289–1301, <https://doi.org/10.1002/ptr.6323>.
- [37] M. Akbari, K.B. Lankarani, R. Tabrizi, M. Ghayour-Mobarhan, P. Peymani, G. Ferns, et al., The effects of curcumin on weight loss among patients with metabolic syndrome and related disorders: a systematic review and meta-analysis of randomized controlled trials, *Front. Pharmacol.* 10 (2019) 649, <https://doi.org/10.3389/fphar.2019.00649>.
- [38] Z. Adab, S. Eghtesadi, M.R. Vafa, I. Heydari, A. Shojaii, H. Haqqani, et al., Effect of turmeric on glycemic status, lipid profile, hs-CRP, and total antioxidant capacity in hyperlipidemic type 2 diabetes mellitus patients, *Phytother. Res.* 33 (4) (2019) 1173–1181, <https://doi.org/10.1002/ptr.6312>.
- [39] M. Alidadi, A. Sahebkar, S. Eslami, F. Vakilian, L. Jarahi, M. Alinezhad-Namaghi, et al., The effect of curcumin supplementation on pulse wave velocity in patients with metabolic syndrome: a randomized, double-blind, placebo-controlled trial, in: G.E. Barreto, A. Sahebkar (Eds.), *Pharmacological properties of plant-derived natural products and implications for human health*, Springer International Publishing, Cham, 2021, pp. 1–11.
- [40] F. Amin, N. Islam, N. Anila, A.H. Gilani, Clinical efficacy of the co-administration of Turmeric and Black seeds (Kalongi) in metabolic syndrome—a double blind randomized controlled trial—TAK-MetS trial, *Complement. Ther. Med.* 23 (2) (2015) 165–174, <https://doi.org/10.1016/j.ctim.2015.01.008>.
- [41] L. Arabnezhad, M. Mohammadifard, L. Rahmani, Z. Majidi, G.A. Ferns, A. Bahrami, Effects of curcumin supplementation on vitamin D levels in women with premenstrual syndrome and dysmenorrhea: a randomized controlled study, *BMC Complement. Med. Ther.* 22 (1) (2022) 19, <https://doi.org/10.1186/s12906-022-03515-2>.
- [42] S. Asadi, M.S. Gholami, F. Siassi, M. Qorbani, K. Khamoshian, G. Sotoudeh, Nano curcumin supplementation reduced the severity of diabetic sensorimotor polyneuropathy in patients with type 2 diabetes mellitus: a randomized double-blind placebo- controlled clinical trial, *Complement. Ther. Med.* 43 (2019) 253–260, <https://doi.org/10.1016/j.ctim.2019.02.014>.
- [43] S.A. Asan, M. Baş, B. Eren, E. Karaca, The effects of curcumin supplementation added to diet on anthropometric and biochemical status in women with polycystic ovary syndrome: a randomized, placebo-controlled trial, *Progr. Nutr.* 22 (4) (2021), e2020089, <https://doi.org/10.23751/pn.v22i4.10460>.
- [44] Z. Bateni, H.R. Rahimi, M. Hedayati, S. Afsharian, R. Goudarzi, G. Sohrab, The effects of nano-curcumin supplementation on glycemic control, blood pressure, lipid profile, and insulin resistance in patients with the metabolic syndrome: a randomized, double-blind clinical trial, *Phytother. Res.* 35 (7) (2021) 3945–3953, <https://doi.org/10.1002/ptr.7109>.
- [45] M.S. Campbell, A.J. Berrones, I.M. Krishnakumar, R.J. Charnigo, P.M. Westgate, B.S. Fleenor, Responsiveness to curcumin intervention is associated with reduced aortic stiffness in young, obese men with higher initial stiffness, *J. Funct. Foods* 29 (2017) 154–160, <https://doi.org/10.1016/j.jff.2016.12.013>.
- [46] S. Chirapongsathorn, J. Jearjesdakul, T. Sanpajit, A. Juthaputthi, Curcumin trend to improve alanine aminotransferase (ALT) in non-alcoholic fatty liver disease (NAFLD) with abnormal ALT, *J. Gastroenterol. Hepatol.* 27 (2012) 231–232.

- [47] S. Chuengsamarn, S. Rattanamongkolgul, B. Phonrat, R. Tungtrongchitr, S. Jirawatnotai, Reduction of atherogenic risk in patients with type 2 diabetes by curcuminoid extract: a randomized controlled trial, *J. Nutr. Biochem.* 25 (2) (2014) 144–150, <https://doi.org/10.1016/j.jnutbio.2013.09.013>.
- [48] S. Chuengsamarn, S. Rattanamongkolgul, R. Luechapudiporn, C. Phisalaphong, S. Jirawatnotai, Curcumin extract for prevention of type 2 diabetes, *Diabetes Care* 35 (11) (2012) 2121–2127, <https://doi.org/10.2337/dc12-0116>.
- [49] A.F.G. Cicero, A. Sahebkar, F. Fogacci, M. Bove, M. Giovannini, C. Borghi, Effects of phytosomal curcumin on anthropometric parameters, insulin resistance, cortisolemia and non-alcoholic fatty liver disease indices: a double-blind, placebo-controlled clinical trial, *Eur. J. Nutr.* 59 (2) (2020) 477–483, <https://doi.org/10.1007/s00394-019-01916-7>.
- [50] J. Heshmati, A. Moini, M. Sepidarkish, M. Morvaridzadeh, M. Salehi, A. Palmowski, et al., Effects of curcumin supplementation on blood glucose, insulin resistance and androgens in patients with polycystic ovary syndrome: a randomized double-blind placebo-controlled clinical trial, *Phytomedicine* 80 (2021) 153395, <https://doi.org/10.1016/j.phymed.2020.153395>.
- [51] F. Di Pierro, A. Bressan, D. Ranaldi, G. Rapacioli, L. Giacomelli, A. Bertuccioli, Potential role of bioavailable curcumin in weight loss and omental adipose tissue decrease: preliminary data of a randomized, controlled trial in overweight people with metabolic syndrome. Preliminary study, *Eur. Rev. Med. Pharmacol. Sci.* 19 (21) (2015) 4195–4202.
- [52] M. Funamoto, K. Shimizu, Y. Sunagawa, Y. Katanasaka, Y. Miyazaki, H. Kakeya, et al., Effects of highly absorbable curcumin in patients with impaired glucose tolerance and non-insulin-dependent diabetes mellitus, *J. Diabetes Res.* 2019 (2019) 8208237, <https://doi.org/10.1155/2019/8208237>.
- [53] H. Hodaie, M. Adibian, O. Nikpayam, M. Hedayati, G. Sohrab, The effect of curcumin supplementation on anthropometric indices, insulin resistance and oxidative stress in patients with type 2 diabetes: a randomized, double-blind clinical trial, *Diabetol. Metab. Syndr.* 11 (1) (2019) 41, <https://doi.org/10.1186/s13098-019-0437-7>.
- [54] M.A. Darmian, R. Hoseini, E. Amiri, S. Golshani, Downregulated hs-CRP and MAD, upregulated GSH and TAC, and improved metabolic status following combined exercise and turmeric supplementation: a clinical trial in middle-aged women with hyperlipidemic type 2 diabetes, *J. Diabetes Metab. Disord.* 21 (1) (2022) 275–283, <https://doi.org/10.1007/s40200-022-00970-z>.
- [55] N. Ismail, S. Ragab, A.N.E. Baky, W. Hashem, A. Ibrahim, Effect of oral curcumin administration on insulin resistance, serum resistin and fetuin-A in obese children: randomized placebo-controlled study, *Res. J. Pharm. Biol. Chem. Sci.* 5 (2014) 887–896.
- [56] D. Husain, M. Jarahzadeh, P. Alavinejad, A. Rezazadeh, M. Haghhighizadeh, Turmeric supplementation in nonalcoholic fatty liver disease, *Plant Arch* 20 (2) (2020) 3640–3647.
- [57] M. Jamilian, F. Foroozanfard, E. Kavossian, E. Aghadavod, R. Shafabakhsh, A. Hoseini, et al., Effects of curcumin on body weight, glycemic control and serum lipids in women with polycystic ovary syndrome: a randomized, double-blind, placebo-controlled trial, *Clin. Nutr.* 36 (2020) 128–133, <https://doi.org/10.1016/j.clnesp.2020.01.005>.
- [58] S.A. Jazayeri-Tehrani, S.M. Rezaayat, S. Mansouri, M. Qorbani, S.M. Alavian, M. Daneshi-Maskooni, et al., Nano-curcumin improves glucose indices, lipids, inflammation, and Nefatin in overweight and obese patients with non-alcoholic fatty liver disease (NAFLD): a double-blind randomized placebo-controlled clinical trial, *Nutr. Metab. (Lond.)* 16 (2019) 8, <https://doi.org/10.1186/s12986-019-0331-1>.
- [59] A. Kalhori, M. Raftaf, R. Navekar, A. Ghaffari, M.A. Jafarabadi, Effect of turmeric supplementation on blood pressure and serum levels of sirtuin 1 and adiponectin in patients with nonalcoholic fatty liver disease: a double-blind, randomized, placebo-controlled trial, *Prev. Nutr. Food Sci.* 27 (1) (2022) 37–44, <https://doi.org/10.3746/pnf.2022.27.1.37>.
- [60] A.S. Jiménez-Osorio, W.R. García-Niño, S. González-Reyes, A.E. Álvarez-Mejía, S. Guerra-León, J. Salazar-Segovia, et al., The effect of dietary supplementation with curcumin on redox status and nrf2 activation in patients with nondiabetic or diabetic proteinuric chronic kidney disease: a pilot study, *J. Ren. Nutr.* 26 (4) (2016) 237–244, <https://doi.org/10.1053/j.jrn.2016.01.013>.
- [61] M. Karandish, H. Mozaffari-khosravi, S.M. Mohammadi, B. Cheraghian, M. Azhdari, The effect of curcumin and zinc co-supplementation on glycemic parameters in overweight or obese prediabetic subjects: a phase 2 randomized, placebo-controlled trial with a multi-arm, parallel-group design, *Phytother. Res.* 35 (8) (2021) 4377–4387, <https://doi.org/10.1002/ptr.7136>.
- [62] A. Kocher, L. Bohnert, C. Schiborr, J. Frank, Highly bioavailable micellar curcuminoids accumulate in blood, are safe and do not reduce blood lipids and inflammation markers in moderately hyperlipidemic individuals, *Mol. Nutr. Food Res.* 60 (7) (2016) 1555–1563, <https://doi.org/10.1002/mnfr.201501034>.
- [63] A. Mohammadi, A. Sahebkar, M. Iranshahi, M. Amini, R. Khojasteh, M. Ghayour-Mobarhan, et al., Effects of supplementation with curcuminoids on dyslipidemia in obese patients: a randomized crossover trial, *Phytother. Res.* 27 (3) (2013) 374–379, <https://doi.org/10.1002/ptr.4715>.
- [64] S.R. Mirhafez, M. Azimi-Nezhad, M. Dehabe, M. Hariri, R.D. Naderan, A. Movahedi, et al., The effect of curcumin phytosome on the treatment of patients with non-alcoholic fatty liver disease: a double-blind, randomized, placebo-controlled trial, in: G.E. Barreto, A. Sahebkar (Eds.), *Pharmacological properties of plant-derived natural products and implications for human health*, Springer International Publishing, Cham, 2021, pp. 25–35.
- [65] B. Moradi Kelardeh, S. Rahmati-Ahmadabad, P. Farzanegi, M. Helalizadeh, M.-A. Azarbayjani, Effects of non-linear resistance training and curcumin supplementation on the liver biochemical markers levels and structure in older women with non-alcoholic fatty liver disease, *J. Bodyw. Mov. Ther.* 24 (3) (2020) 154–160, <https://doi.org/10.1016/j.jbmt.2020.02.021>.
- [66] D.C. Nieman, L. Cialdella-Kam, A.M. Knab, R.A. Shanely, Influence of red pepper spice and turmeric on inflammation and oxidative stress biomarkers in overweight females: a metabolomics approach, *Plant Foods Hum. Nutr.* 67 (4) (2012) 415–421, <https://doi.org/10.1007/s11130-012-0325-x>.
- [67] A. Osali, Aerobic exercise and nano-curcumin supplementation improve inflammation in elderly females with metabolic syndrome, *Diabetol. Metab. Syndr.* 12 (1) (2020) 26, <https://doi.org/10.1186/s13098-020-00532-4>.
- [68] Y. Panahi, N. Khalili, E. Sahebi, S.Z. Namazi, Reiner, M. Majeed, et al., Curcuminoids modify lipid profile in type 2 diabetes mellitus: a randomized controlled trial, *Complement Ther. Med.* 33 (2017) 1–5, <https://doi.org/10.1016/j.ctim.2017.05.006>.
- [69] Y. Panahi, P. Kianpour, R. Mohtashami, R. Jafari, L.E. Simental-Mendia, A. Sahebkar, Efficacy and safety of phytosomal curcumin in non-alcoholic fatty liver disease: a randomized controlled trial, *Drug Res (Stuttg.)* 67 (2017) 244–251, <https://doi.org/10.1055/s-0043-100019>, 04.
- [70] F. Pourhabibi-Zarandi, M. Raftaf, H. Zayeni, M. Asghari-Jafarabadi, A.-A. Ebrahimi, Effects of curcumin supplementation on metabolic parameters, inflammatory factors and obesity values in women with rheumatoid arthritis: a randomized, double-blind, placebo-controlled clinical trial, *Phytother. Res.* 36 (4) (2022) 1797–1806, <https://doi.org/10.1002/ptr.7422>.
- [71] H.R. Rahimi, A.H. Mohammadpour, M. Dastani, M.R. Jaafari, K. Abnous, M. Ghayour Mobarhan, et al., The effect of nano-curcumin on HbA1c, fasting blood glucose, and lipid profile in diabetic subjects: a randomized clinical trial, *Avicenna J. Phytomed.* 6 (5) (2016) 567–577.
- [72] S. Rahmani, S. Asgary, G. Askari, M. Keshvari, M. Hatampour, A. Feizi, et al., Treatment of non-alcoholic fatty liver disease with curcumin: a randomized placebo-controlled trial, *Phytother. Res.* 30 (9) (2016) 1540–1548, <https://doi.org/10.1002/ptr.5659>.
- [73] S. Rezaie, G. Askari, F. Khorvash, M.J. Tarrahi, R. Amani, Effects of curcumin supplementation on clinical features and inflammation, in migraine patients: a double-blind controlled, placebo randomized clinical trial, *Int. J. Prev. Med.* 12 (2021) 161, https://doi.org/10.4103/ijpvm.IJPVM_405_20.
- [74] S. Saadati, A. Hekmatdoost, B. Hatami, A. Mansour, Z. Zahra, M. Hedayati, et al., Comparing different non-invasive methods in assessment of the effects of curcumin on hepatic fibrosis in patients with non-alcoholic fatty liver disease, *Gastroenterol. Hepatol. Bed Bench* 11 (Suppl 1) (2018) S8–S13.
- [75] S. Saadati, B. Hatami, Z. Yari, M.A. Shahrbaf, S. Eghtesad, A. Mansour, et al., The effects of curcumin supplementation on liver enzymes, lipid profile, glucose homeostasis, and hepatic steatosis and fibrosis in patients with non-alcoholic fatty liver disease, *Eur. J. Clin. Nutr.* 73 (3) (2019) 441–449, <https://doi.org/10.1038/s41430-018-0382-9>.
- [76] M. Saberi-Karimian, M. Keshvari, M. Ghayour-Mobarhan, L. Salehizadeh, S. Rahmani, B. Behnam, et al., Effects of curcuminoids on inflammatory status in patients with non-alcoholic fatty liver disease: a randomized controlled trial, *Complement, Ther. Med.* 49 (2020) 102322, <https://doi.org/10.1016/j.ctim.2020.102322>.
- [77] M. Saberi-Karimian, S.M.R. Parizadeh, M. Ghayour-Mobarhan, M.M. Salahshoh, B.F. Dizaji, H. Safarian, et al., Evaluation of the effects of curcumin in patients with metabolic syndrome, *Compar. Clin. Pathol.* 27 (3) (2018) 555–563, <https://doi.org/10.1007/s00580-017-2624-y>.
- [78] R. Shafabakhsh, Z. Asemi, Z. Reiner, A. Soleimani, E. Aghadavod, F. Bahmani, The effects of nano-curcumin on metabolic status in patients with diabetes on hemodialysis, a randomized, double blind, placebo-controlled trial, *Iran, J. Kidney Dis.* 14 (4) (2020) 290–299.
- [79] M. Salimi Avansar, The effects of eight weeks interval training and curcumin consumption on TNF- α and BDNF levels in men with metabolic syndrome, *J. Arabidil. Univ. Med. Sci.* 17 (3) (2017) 299–310.
- [80] S. Sohaei, R. Amani, M.J. Tarrahi, H. Ghasemi-Tehrani H, The effects of curcumin supplementation on glycemic status, lipid profile and hs-CRP levels in overweight/obese women with polycystic ovary syndrome: a

- randomized, double-blind, placebo-controlled clinical trial, *Complement. Ther. Med.* 47 (2019) 102201, <https://doi.org/10.1016/j.ctim.2019.102201>.
- [81] S.M. Sohrevardi, B. Heydari, M.R. Azarpazhooh, M. Teymourzadeh, L.E. Simental-Mendia, et al., Therapeutic effect of curcumin in women with polycystic ovary syndrome receiving metformin: a randomized controlled trial, *Adv. Exp. Med. Biol.* 1308 (2021) 109–117, https://doi.org/10.1007/978-3-030-64872-5_9.
- [82] E. Sukandar, P. Sudjana, J. Sigit, N. Leliqia, F. Lestari, Safety of garlic (*Allium sativum*) and turmeric (*Curcuma domestica*) extract in comparison with simvastatin on improving lipid profile in dyslipidemia patients, *J. Med. Sci.* 13 (2013) 10–18, <https://doi.org/10.3923/jms.2013.10.18>.
- [83] D.F. Sousa, M.F.M. Araújo, V.D. de Mello, M.M.C. Damasceno, R. Freitas, Cost-effectiveness of passion fruit albedo versus turmeric in the glycemic and lipaemic control of people with type 2 diabetes: randomized clinical trial, *J. Am. Coll. Nutr.* 40 (8) (2021) 679–688, <https://doi.org/10.1080/07315724.2020.1823909>.
- [84] S. Tabaee, A. Sahebkar, T. Aghamohammadi, M. Pakdel, M. Dehabe, R. Sobhani, et al., The effects of curcumin plus piperine supplementation in patients with acute myocardial infarction: a randomized, double-blind, and placebo-controlled trial, *Adv. Exp. Med. Biol.* 1328 (2021) 199–211, https://doi.org/10.1007/978-3-030-73234-9_13.
- [85] R. Uchio, K. Kawasaki, C. Okuda-Hanafusa, R. Saji, K. Muroyama, S. Murosaki, et al., *Curcuma longa* extract improves serum inflammatory markers and mental health in healthy participants who are overweight: a randomized, double-blind, placebo-controlled trial, *Nutr. J.* 20 (1) (2021) 91, <https://doi.org/10.1186/s12937-021-00748-8>.
- [86] G. Vafadar Afshar, Y. Rasmi, P. Yaghmaei, M.H. Khadem-Ansari, K. Makhdomi, J. Rasooli, The effects of nano-curcumin supplementation on serum level of hs-CRP, adhesion molecules, and lipid profiles in hemodialysis patients, a randomized controlled clinical trial, Iran, *J. Kidney Dis.* 14 (1) (2020) 52–61.
- [87] Y.S. Yang, Y.F. Su, H.W. Yang, Y.H. Lee, J.I. Chou, K.C. Ueng, Lipid-lowering effects of curcumin in patients with metabolic syndrome: a randomized, double-blind, placebo-controlled trial, *Phytother. Res.* 28 (12) (2014) 1770–1777, <https://doi.org/10.1002/ptr.5197>.
- [88] J. Zhou, Y. Chen, J. Yu, T. Li, Z. Lu, Y. Chen, et al., The efficacy of novel metabolic targeted agents and natural plant drugs for nonalcoholic fatty liver disease treatment: a PRISMA-compliant network meta-analysis of randomized controlled trials, *Medicine* 100 (12) (2021), e24884, <https://doi.org/10.1097/md.00000000000024884>.
- [89] *Turmeric, Drugs and Lactation Database (LactMed)*, National Library of Medicine, Bethesda, MD, 2006.
- [90] EFSA Panel on Food Additives and Nutrient Sources added to Food (ANS) scientific opinion on the re-evaluation of curcumin (E 100) as a food additive, *EFSA J* 8 (9) (2010) 1679.
- [91] C.D. Lao, M.T.t. Ruffin, D. Normolle, D.D. Heath, S.I. Murray, J.M. Bailey, et al., Dose escalation of a curcuminoid formulation, *BMC Complement. Altern. Med.* 6 (2006) 10, <https://doi.org/10.1186/1472-6882-6-10>.
- [92] J. Shaikh, D.D. Ankola, V. Beniwal, D. Singh, M.N. Kumar, Nanoparticle encapsulation improves oral bioavailability of curcumin by at least 9-fold when compared to curcumin administered with piperine as absorption enhancer, *Eur. J. Pharm. Sci.* 37 (3–4) (2009) 223–230, <https://doi.org/10.1016/j.ejps.2009.02.019>.
- [93] S. Mishra, K. Palanivelu, The effect of curcumin (turmeric) on Alzheimer's disease: an overview, *Ann. Indian Acad. Neurol.* 11 (1) (2008) 13–19, <https://doi.org/10.4103/0972-2327.40220>.
- [94] A. Karthikeyan, N. Senthil, T. Min, Nanocurcumin, a promising candidate for therapeutic applications, *Front. Pharmacol.* 11 (2020) 487, <https://doi.org/10.3389/fphar.2020.00487>.
- [95] Y. Henrotin, F. Priem, A. Mobasheri, Curcumin: a new paradigm and therapeutic opportunity for the treatment of osteoarthritis: curcumin for osteoarthritis management, *SpringerPlus* 2 (1) (2013) 56, <https://doi.org/10.1186/2193-1801-2-56>.
- [96] R. Tabanelli, S. Brogi, V. Calderone, Improving curcumin bioavailability: current strategies and future perspectives, *Pharmaceutics* 13 (10) (2021) 1715, <https://doi.org/10.3390/pharmaceutics13101715>.
- [97] S. Prasad, A.K. Tyagi, B.B. Aggarwal, Recent developments in delivery, bioavailability, absorption and metabolism of curcumin: the golden pigment from golden spice, *Cancer Res Treat* 46 (1) (2014) 2–18, <https://doi.org/10.4143/crt.2014.46.1.2>.
- [98] S.J. Stohs, J. Ji, L.R. Bucci, H.G. Preuss, A comparative pharmacokinetic assessment of a novel highly bioavailable curcumin formulation with 95% curcumin: a randomized, double-blind, crossover study, *J. Am. Coll. Nutr.* 37 (1) (2018) 51–59, <https://doi.org/10.1080/07315724.2017.1358118>.
- [99] G. Shoba, D. Joy, T. Joseph, M. Majeed, R. Rajendran, P.S. Srinivas, Influence of piperine on the pharmacokinetics of curcumin in animals and human volunteers, *Planta Med* 64 (4) (1998) 353–356, <https://doi.org/10.1055/s-2006-957450>.
- [100] Z. Sun, X. Wei, J. Bai, W. Li, J. Yang, Z. Deng, et al., The effects of curcumin on anthropometric and cardiometabolic parameters of patients with metabolic related diseases: a systematic review and dose-effect meta-analysis of randomized controlled trials, *Crit. Rev. Food Sci. Nutr.* (2022) 1–17, <https://doi.org/10.1080/10408398.2022.2067826>.
- [101] M. Alidadi, A. Sahebkar, S. Eslami, F. Vakilian, L. Jarahi, M. Alinezhad-Namaghi, et al., The effect of curcumin supplementation on pulse wave velocity in patients with metabolic syndrome: a randomized, double-blind, placebo-controlled trial, *Adv. Exp. Med. Biol.* 1308 (2021) 1–11, https://doi.org/10.1007/978-3-030-64872-5_1.
- [102] A.D.R. Nurcahyanti, F. Cokro, M.P. Wulanjati, M.F. Mahmoud, M. Wink, M. Sobeh, Curcuminoids for metabolic syndrome: meta-analysis evidences toward personalized prevention and treatment management, *Front. Nutr.* 9 (2022) 891339, <https://doi.org/10.3389/fnut.2022.891339>.
- [103] Y. Panahi, N. Khalili, E. Sahebi, S. Namazi, S.L. Atkin, M. Majeed, et al., Curcuminoids plus piperine modulate adipokines in type 2 diabetes mellitus, *Curr. Clin. Pharmacol.* 12 (4) (2017) 253–258, <https://doi.org/10.2174/1574884713666180104095641>.
- [104] R. Navekar, M. Rafraf, A. Ghaffari, M. Asghari-Jafarabadi, M. Khoshbaten, Turmeric supplementation improves serum glucose indices and leptin levels in patients with nonalcoholic fatty liver diseases, *J. Am. Coll. Nutr.* 36 (4) (2017) 261–267, <https://doi.org/10.1080/07315724.2016.1267597>.
- [105] F.J. Alsharif, Y.A. Almuhtadi, The effect of curcumin supplementation on anthropometric measures among overweight or obese adults, *Nutrients* 13 (2) (2021) 680, <https://doi.org/10.3390/nu13020680>.
- [106] E. Vamanu, S.N. Rai, The link between obesity, microbiota dysbiosis, and neurodegenerative pathogenesis, *Diseases* 9 (3) (2021) 45, <https://doi.org/10.3390/diseases9030045>.
- [107] F. Ghiamati Yazdi, S. Soleimani-Zad, E. van den Worm, G. Folkerts, Turmeric extract: potential use as a prebiotic and anti-inflammatory compound? *Plant Foods Hum. Nutr.* 74 (3) (2019) 293–299, <https://doi.org/10.1007/s11130-019-00733-x>.
- [108] K. Kasprzak-Drozd, T. Oniszczuk, M. Ganczar, A. Kondracka, R. Rusinek, A. Oniszczuk, Curcumin and weight loss: does it work? *Int. J. Mol. Sci.* 23 (2) (2022) 639, <https://doi.org/10.3390/ijms23020639>.
- [109] T. Zou, S. Li, B. Wang, Z. Wang, Y. Liu, J. You, Curcumin improves insulin sensitivity and increases energy expenditure in high-fat-diet-induced obese mice associated with activation of FNDC5/irisin, *Nutrition* 90 (2021) 111263, <https://doi.org/10.1016/j.nut.2021.111263>.
- [110] R.F. Hamman, R.R. Wing, S.L. Edelstein, J.M. Lachin, G.A. Bray, L. Delahanty, et al., Effect of weight loss with lifestyle intervention on risk of diabetes, *Diabetes Care* 29 (9) (2006) 2102–2107, <https://doi.org/10.2337/dc06-0560>.
- [111] D.H. Ryan, S.R. Yockey, Weight loss and improvement in comorbidity: differences at 5%, 10%, 15%, and over, *Curr. Obes. Rep.* 6 (2) (2017) 187–194, <https://doi.org/10.1007/s13679-017-0262-y>.